

STYLINE

DOOR & WINDOW SYSTEMS



Less is More

At STYLINE™ we have embraced the fact that less is more. With our THINLINE™ series, we have been able to limit the amount of visible frame and track, therefore creating less interrupted light. Create beautiful expansive rooms, unobstructed views, and maximize the feeling of interior and exterior spaces as the feeling of one.







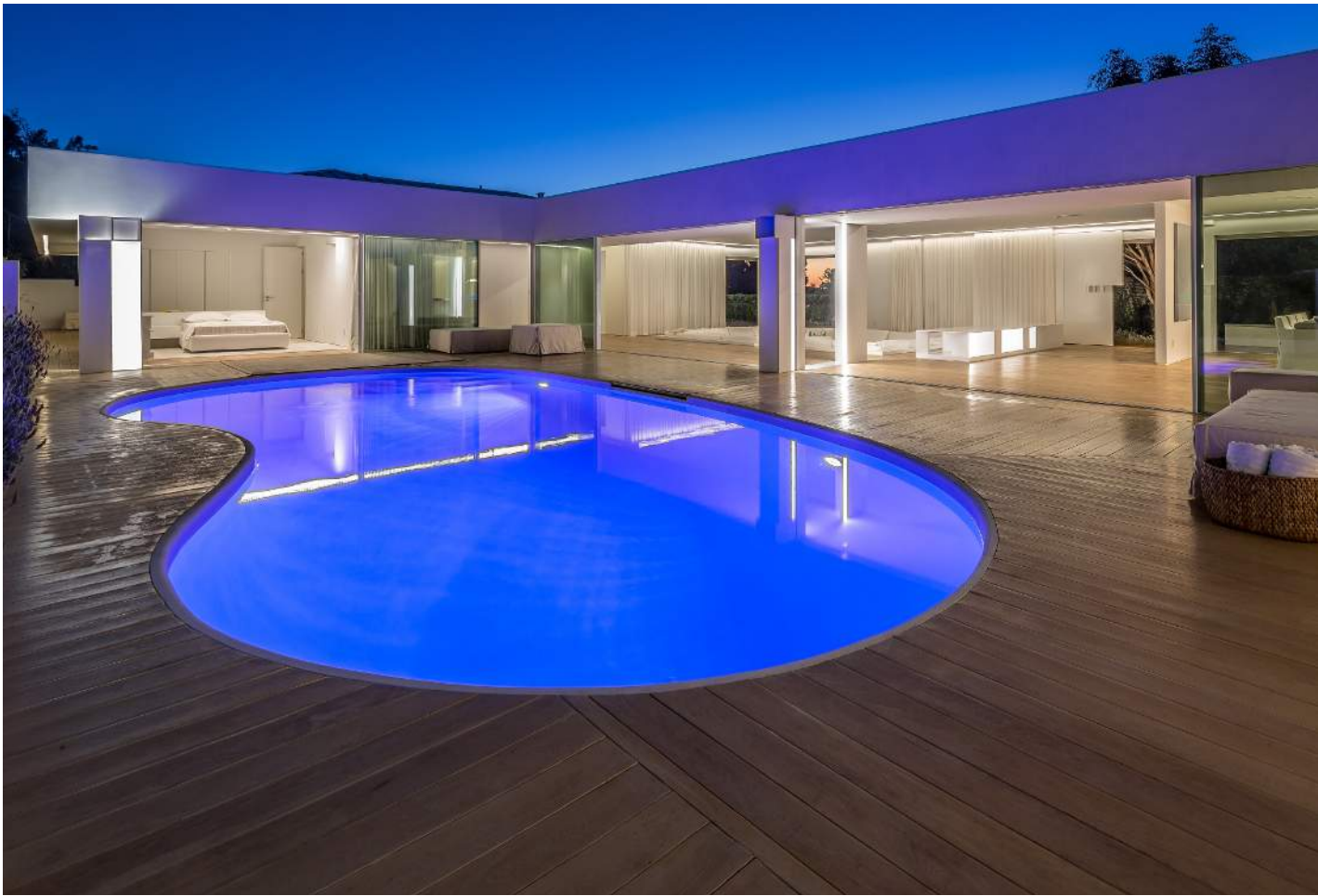
Manufactured in the USA

At STYLINE™ we pride ourselves on the ability to design, manufacture and assemble all of our products right here in the United States. Working with STYLINE™ means creating timeless, comfortable living spaces that make no compromise. The frameless sliding windows is a modular system that combines one of a kind engineering. Our product design is near limitless and all options are designed specific to your lifestyle. Our products can be manufactured in massive sizes, many over twelve feet tall. With the use of the highest quality hardware, along with precision craftsmanship, our products are guaranteed to function and operate smoothly for the duration of the products life. STYLINE™ is able to provide for even the most luxurious homes, hotels and architectural building because our expertise in fit and finish. Allow us to open your living spaces to the splendor of the outdoors.

SLIDING



The THINLINE™ System allows the glass to function as the structural support, and rolls with ease as the system glides on a roller system fit with stainless steel ball bearings. A system that is available in Fixed, Sliding or a combination of both allows for a vast range of possible configurations. Depending on panel size, thermal and wind requirements we have a sliding product to suit your project.



3/4" Mullions, Flush Transitions

Offering the slimmest sight-lines in the world, the STYLINE™ THINLINE™ series sliding glass doors and windows are known for it's 3/4" mullions and flush transitions.

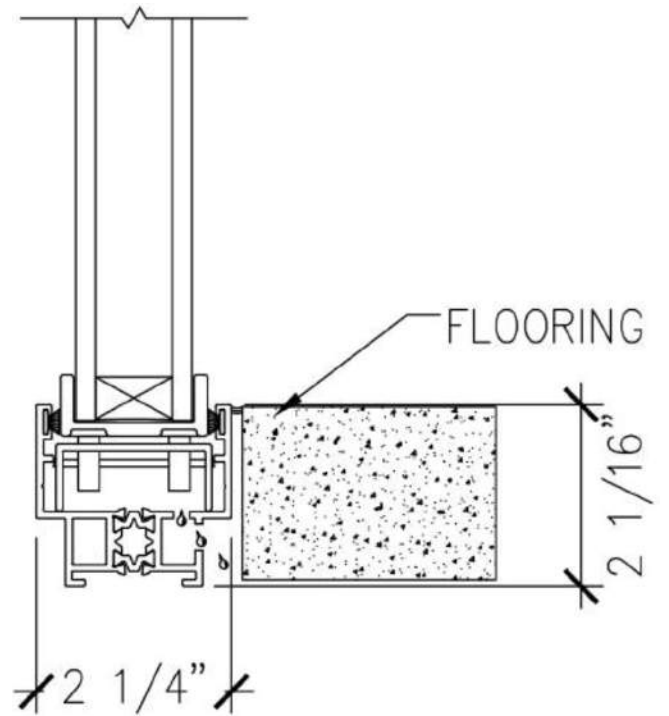
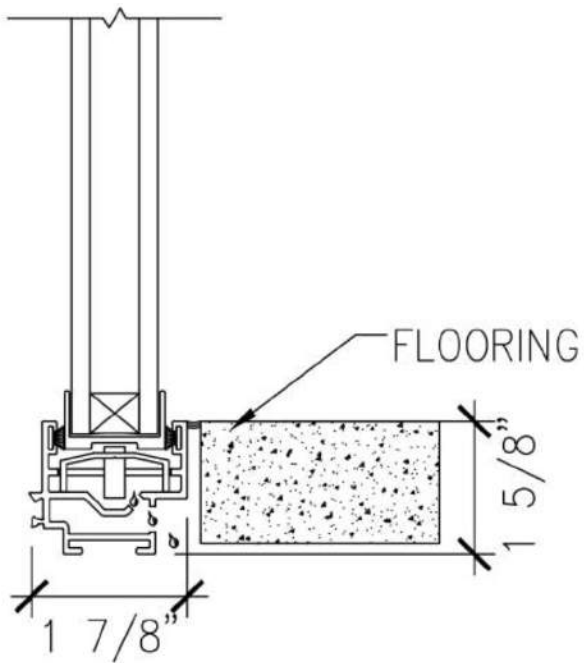
Available in floor-to-ceiling heights and limitless widths. Giving your home the least amount of frame exposure allowing interior and exterior spaces to feel as if they are one.



1000 Series



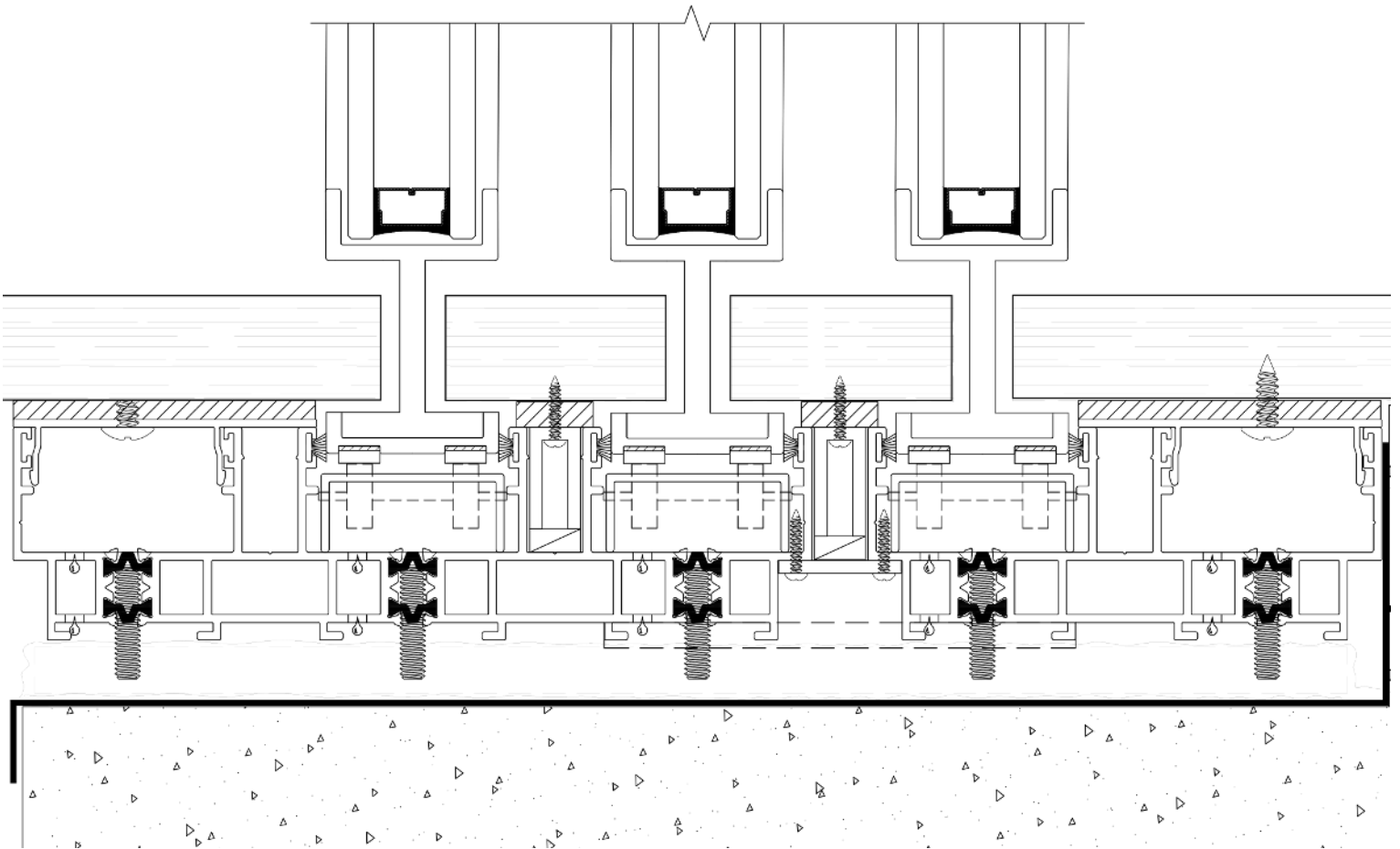
2500 Series





Hidden Track

The STYLINE™ Hidden Track system give the system a seamless transition between the inside and the outside that is completely flush with the floor. The sliding door glides on the floor tracking only 3/8" wide. With the ability to apply the same flooring material between the slots enhances the smooth transition between the indoor and outdoor. Open the doors and you will notice the seamless transition that is pleasing on the eye.



STYLINE
DOOR & WINDOW SYSTEMS





Open with Ease

The THINLINE™ series sliding door allows a person of any size to glide the panels along its track with only the push of a finger. Since our sliding system was designed with weight and gravity in mind it led us to glide rather than roll. We have managed to make thousand pound panels feel as if they are a fraction of that.

Complete Automation

Automation can be applied to our systems giving you the ability to operate any of our sliding products with the push of a button.

Thermally Broken

Having a "true" thermally broken product will reduce thermal conductivity better than any other application on the US market. This can be crucial when trying to meet strict energy requirements.

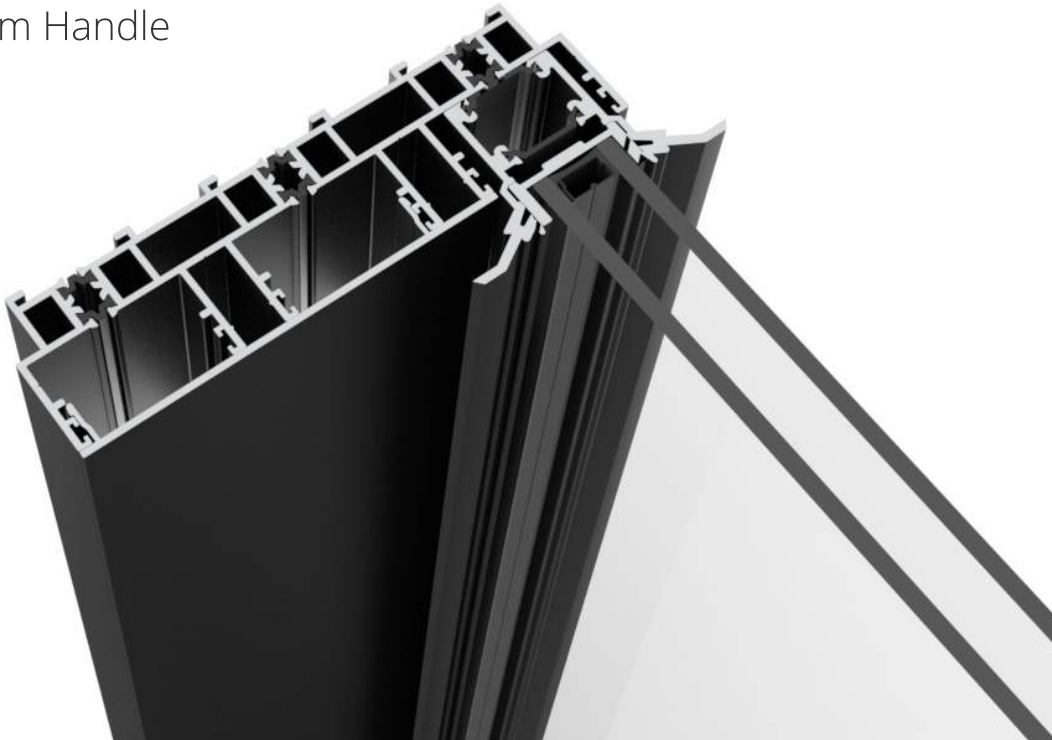




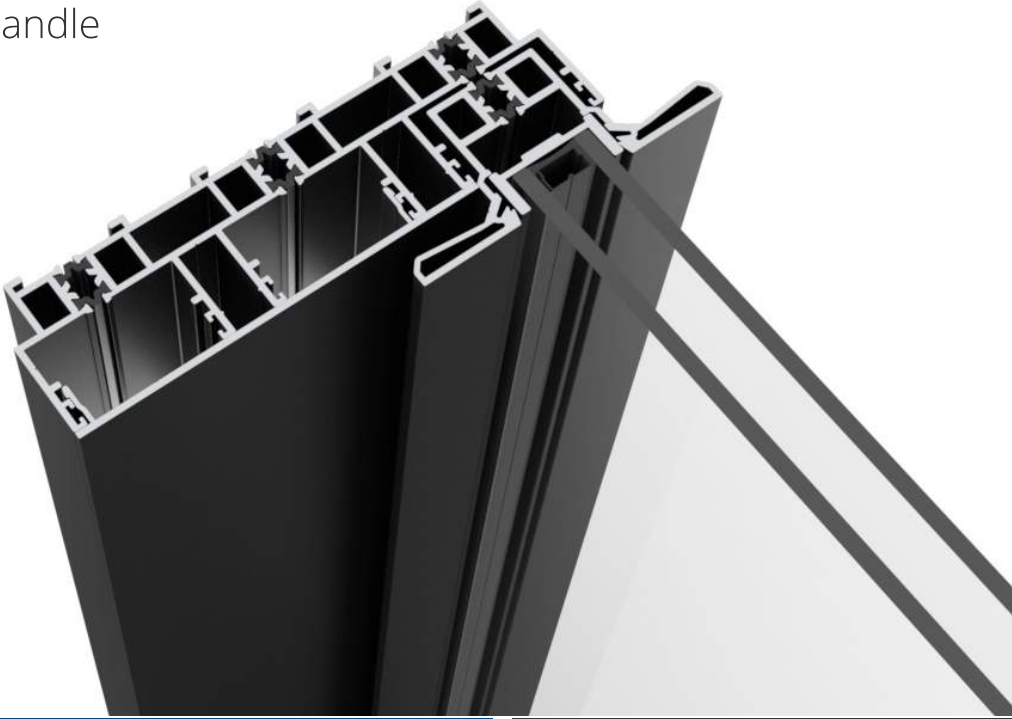


Handle Options

Trim Handle



GT Handle







Aluminum Colors

Standard Finishes



F6 - Dark Bronze



Clear

Standard Colors (Satin and Dark Bronze) for the THINLINE™ Series Doors are available in-stock. Our products can be customized to match almost any finish. Samples shown are representative only. For exact paint samples, Please contact us.

Kynar® Finishes and Custom Colors are Available!

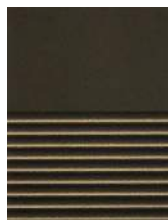
Optional Finishes



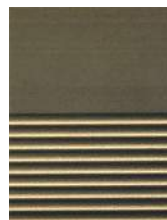
F5 - Med Bronze



F4 - Bronze



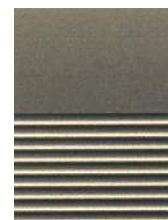
F3 - Light Bronze



F2 - Champagne



F1 - Lt. Champagne



F0 - Stainless



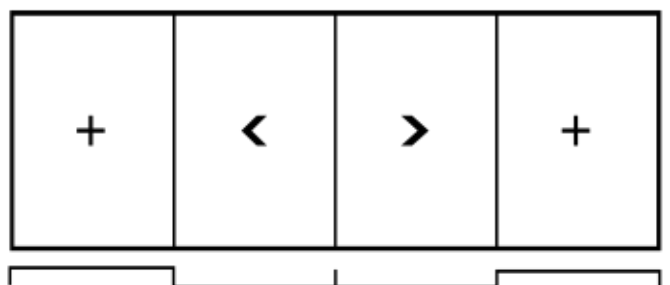
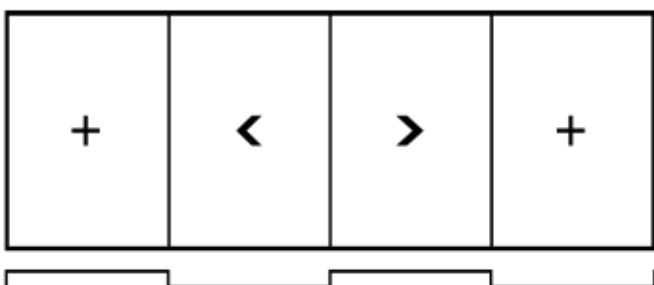
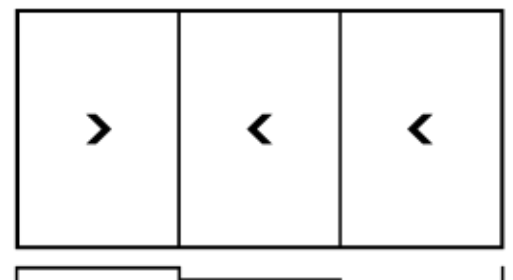
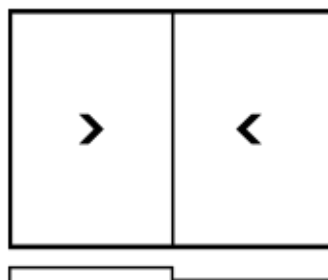
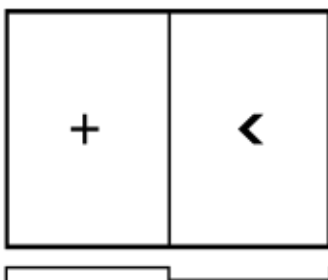
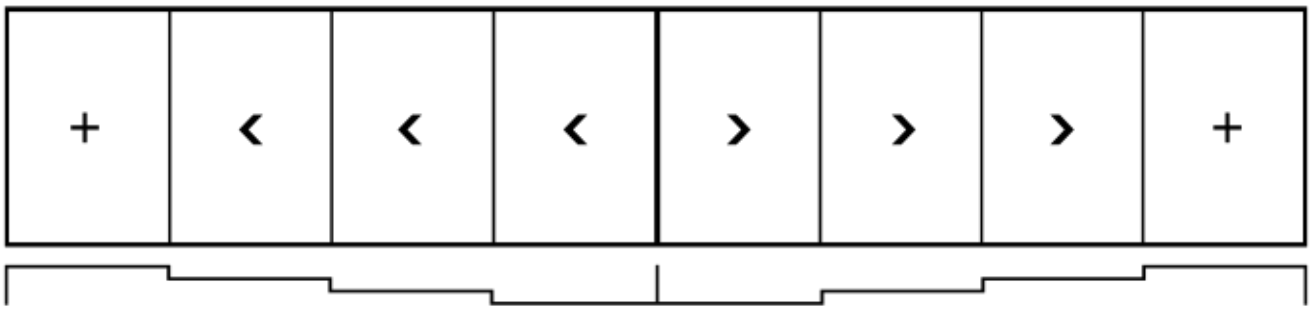
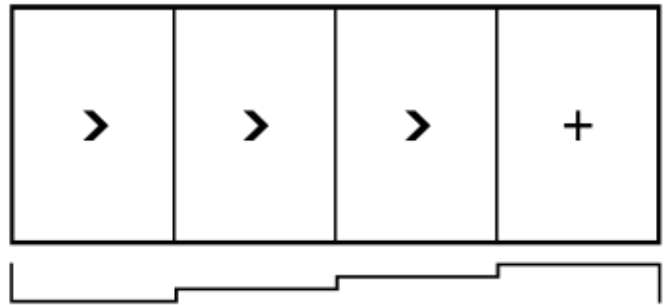
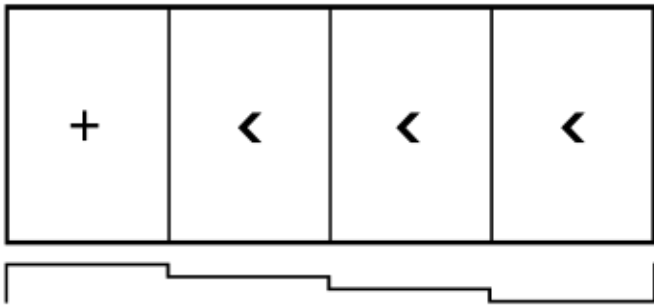
F3 - Gold



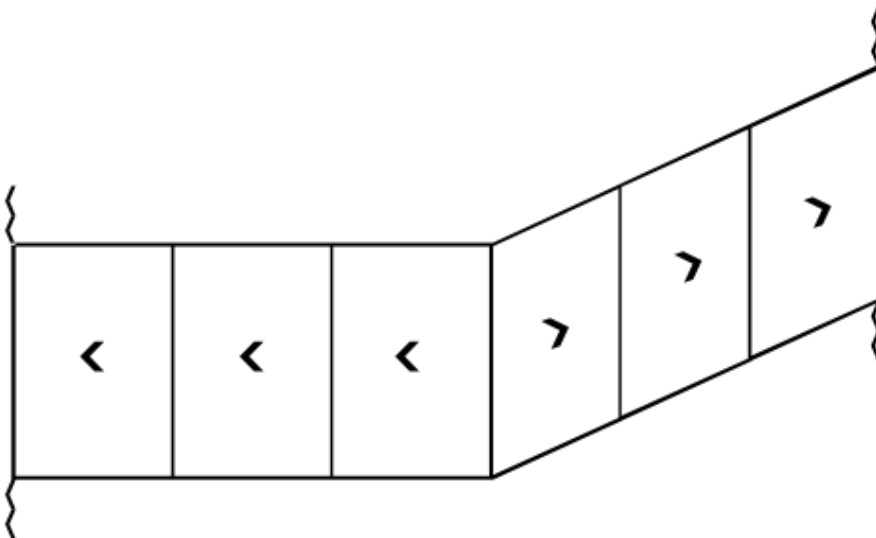
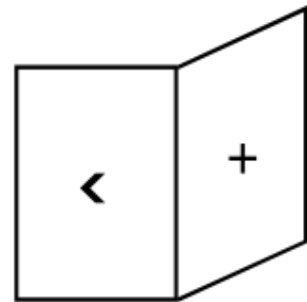
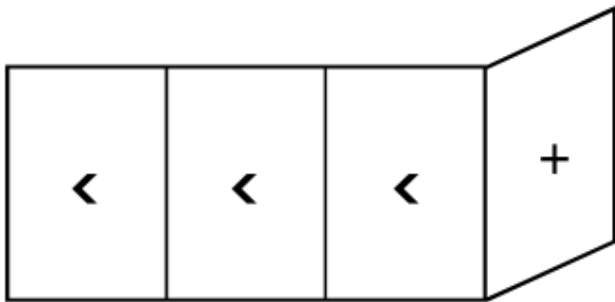
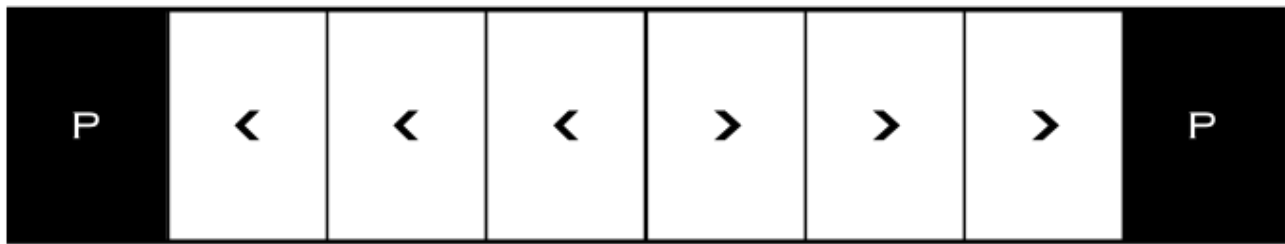
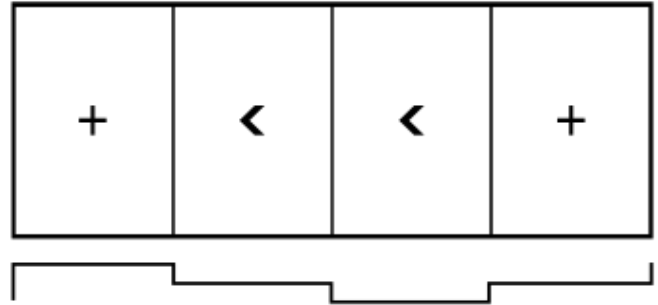
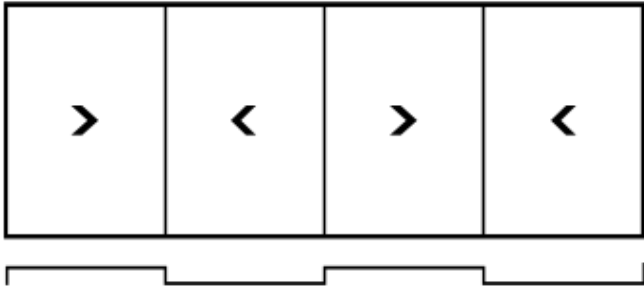
F1 - Gold



Opening Conditions



Endless Fixed and Sliding Panel Configurations.



PIVOT

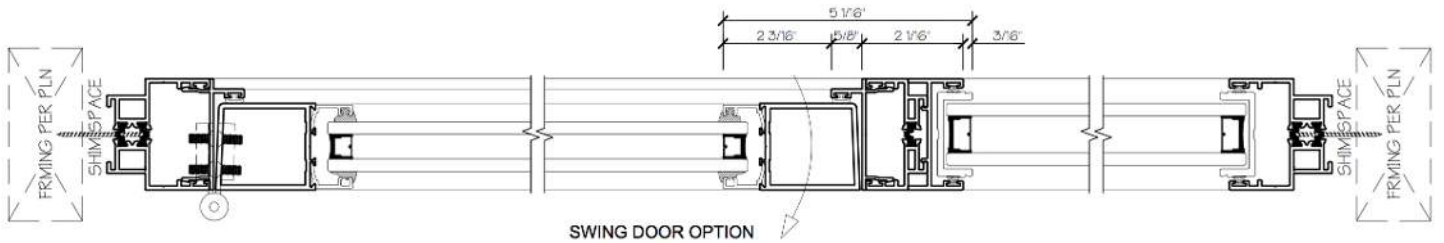
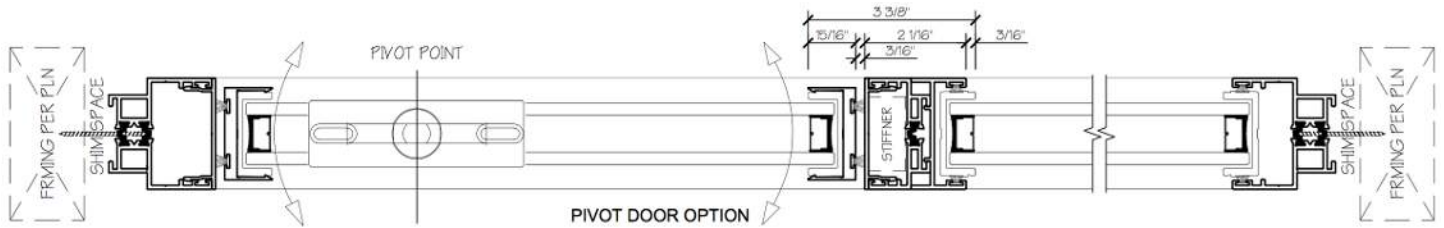
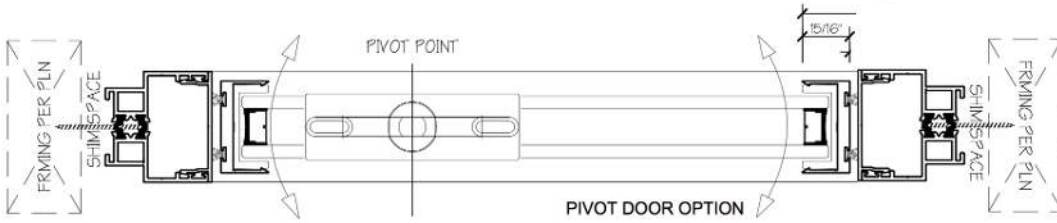


The near frame-less pivot door. The THINLINE™ - PIVOT door is capable of massive sizes and various style options. Choose from a variety of handle and locking options.

Please contact sales@styleline.us to request full details on our Pivot and Swing Door systems.



PIVOT DETAILS



Frame less option available as pictured



MALUX™

Casement, Awning, Hopper, Fixed



The Malux™ T-200 Series Casement, Awning, Hopper series window is a thermally broken series window. Available as fixed, in swing or out swing.



Feature and Options

- 2" deep frame system
- Long equal leg, short leg, unequal leg available
- Can be configured as an awning (project out), hopper (project in), casement (both project in/out) and fixed picture window.
- Roto gear operator with fixed arm available on all casement window - optional

See www.styline.us for up-to-date hardware options.



STYLINE
DOOR & WINDOW SYSTEMS

420 E. Easy Street
Simi Valley, CA 93065
(805) 522-6300
sales@styline.us
www.styline.us